

Choceň-Maximěstí

Fn. 434 2

lokáda 434.2

Pr 7251

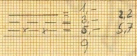
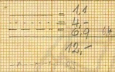
Poměr mísení uhlí 1:2 (4400 kcal/kg)

10cm = 20km

18,0

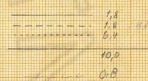
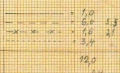


3.5 4.3 7.0



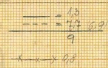
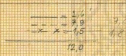
55.68

G-400



18,0

G-510



Chocení

Mokotou 54

Ujetec a Chocení

Mokotou 2

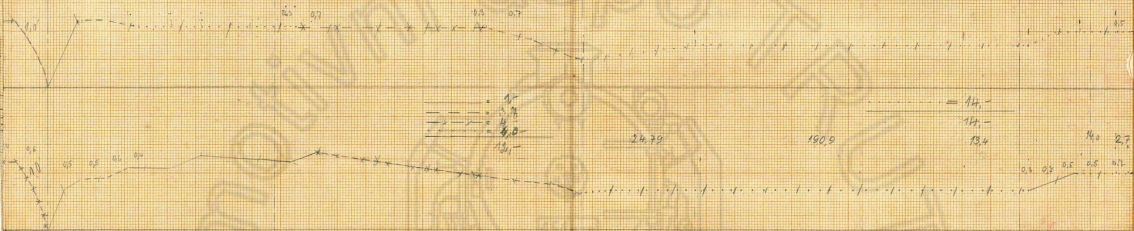
Čermíná a Č.



68,2

189,3

39,6

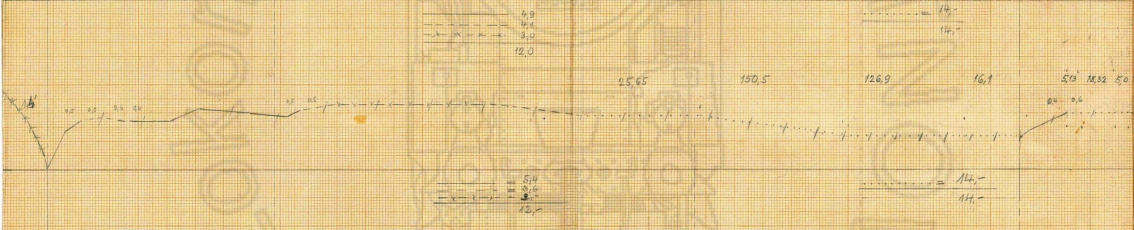


24,79

190,9

14, -
14, -
13,4

14,0
2,7



25,65

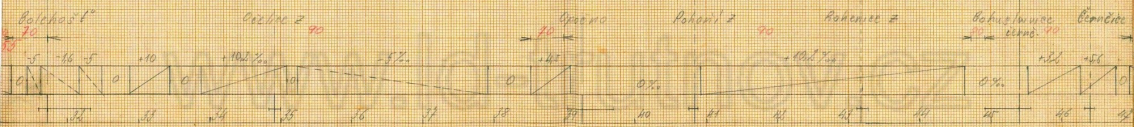
150,5

126,9

16,1

50, 18,32
50

14, -
14, -
11, -



02,2

04,0

10,0

0,5 0,5

0,5 0,5

1,0	=	31,0
0,5	=	15,5
0,5	=	15,5
10,0	=	10,0
29,7	=	29,7
31,0	=	31,0

111,2 v 0,5

122,5

12,0 10,6 0,5 0,1

1,5	=	689,0
1,0	=	50,37
1,0	=	111,26
4,0	=	125,41
19,0 (205)	=	2.565,44

Htkm 25,484
 ubli 2.565,44
 norma 100,2

1,0	=	31,0
0,5	=	15,5
0,5	=	15,5
10,0	=	10,0
29,7	=	29,7
31,0	=	31,0

126,9

150,0

10,5 8,0 0,5 0,5

2,0	=	1.337,5
1,0	=	67,0
10,8	=	96,68
5,2	=	1975,62
19,0 (205)	=	3.465,20

Htkm 36,320
 ubli 3.465,20
 norma 95,4

1,0	=	31,0
0,5	=	15,5
0,5	=	15,5
10,0	=	10,0
29,7	=	29,7
31,0	=	31,0

2,0	=	1700,0
2,0	=	72,7
3,5	=	78,05
6,5	=	2.302,75
19,0 (205)	=	4.153,50

Htkm 47,276
 ubli 4.153,50
 norma 87,9

1.565,46 pante

